



TJ, YJ WINCH MOUNTING PLATE

Thank you for choosing Rough Country

Please read instructions before beginning installation. Check the kit hardware against the parts list and product layout. Be sure you have all needed parts and know where they go. Also please review tools needed list and make sure you have needed tools.

If questions exist we will be happy to answer any questions concerning the design, function, and correct use of this product.

The installer must verify that the mounting kit does not interfere with the factory air bag sensors, which must not be relocated or modified in any way. The vehicles air bag system may not operate properly if the winch mounting kit is not mounted in compliance with the vehicle manufacturers recommendations.

Winch mounting should only be performed on vehicles with standard OEM bumpers.

Kit Contents

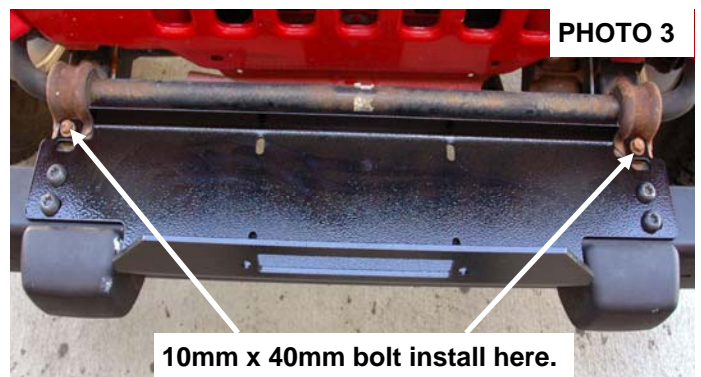
- 1- Mounting Plate
- 1- Kit Bag including
 - 2- Small Thick Washers.
 - 2- Large Thick Washers
 - 4- 1/2" x 2.75" Bolt
 - 4- 1/2" Flat Washers

Tools Needed

- T55 Torx bit
- 3/8" Wrench
- 3/4" Socket
- 15mm Socket

TJ INSTALLATION

1. Place vehicle on a flat surface and set emergency brake.
2. Remove the front valence (sway bar cover), using a 3/8" wrench. **See PHOTO 1**
3. Using a T55 torx socket, remove the front bumper mounting hardware and tow hooks if equipped.
4. Using a 15mm socket remove the front stabilizer mounting bolts.
5. If installing a winch at this time it is recommended that you install the winch to the mounting plate, before installing the plate on the vehicle.
6. Place mounting plate on the front bumper and align the mounting holes on the bracket with the holes on the bumper.
7. Install the two small washers over the holes where the two front sway bar mount bolts were removed to level the plate. **See PHOTO 2**
8. Install the supplied 10mm x 40mm bolts in the sway bar mount holes and replace the 4 bumper bolts, using a T55 Torx bit, and torque to 75 ft. lbs. If replacing tow hooks use a 3/4" socket, and install the provided



9. On the TJ the front valence can be replaced with some trimming, if you elect to keep the valance see **PHOTO 4 and 5** for required cutting.
10. Trim the valence as shown below and replace, using a 3/8" wrench.
11. Check the torque on all fasteners after the first use of the winch. Periodically inspect the components for tightness.

PHOTO 4



PHOTO 5



YJ INSTALLATION

1. Place vehicle on a flat surface and set emergency brake.
2. Remove the front valence, using a 3/8" wrench. Using a T55 torx socket, remove the front bumper mounting hardware and tow hooks if equipped.
3. If installing a winch at this time it is recommended that you install the winch to the mounting plate, before installing the plate on the vehicle.
4. Install the two large washers over the holes where the two rear bolts were removed to level the plate. **See PHOTO 1.**
5. Place mounting plate on bumper and align holes. **See PHOTO 2.**
6. Replace the 4 bumper bolts, using a T55 Torx bit, and torque to 75 ft. lbs. If reinstalling aftermarket tow hooks use a 3/4" socket, and install the provided bolts and washers, and torque to 75 ft. lbs. **See PHOTO 3**

