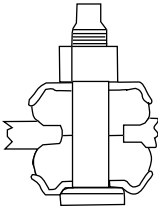


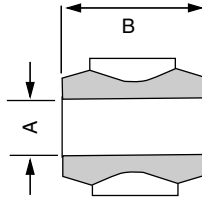
MOUNTING CODES

STEM



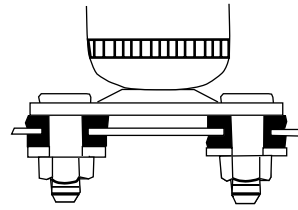
CODE	THREAD
S1	M10
S2	M12
S3	3/8 - 24
S4	3/8 - 16
S5	1/2 - 13
S6	5/8 - 11

LOOP MOUNTING



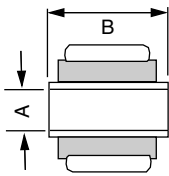
CODE	A	B
L1	5/8	15/16
L2	11/16	19/16
L3	3/4	19/16
L4	1	13/4
L5	11/4	29/16

STUD PLATE



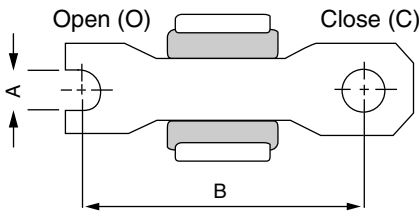
CODE SP

BUSHING & SLEEVE



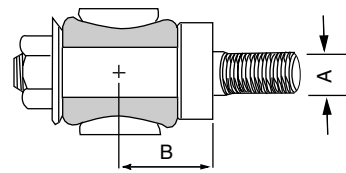
CODE	A	B	CODE	A	B	CODE	A	B	CODE	A	B
LS1	10MM	15/16	LS27	12MM	19/16	LS53	5/8/16MM	2	LS79	5/8/16MM	13/8
LS2	10MM	1	LS28	12MM	15/8	LS54	3/4	13/4	LS80	5/8/16MM	13/4
LS3	10MM	11/4	LS29	12MM	13/4	LS55	18MM	15/8	LS81	5/8/16MM	17/8
LS4	10MM	13/8	LS30	12MM	17/8	LS56	20MM	19/16	LS82	5/8/16MM	11/2
LS5	10MM	17/16	LS31	12MM	2	LS57	20MM	2	LS83	18MM	2
LS6	10MM	19/16	LS32	12MM	21/8	LS58	20MM	27/16	LS84	12MM	23/8
LS7	10MM	15/8	LS33	12MM	25/16	LS59	3/4	313/16	LS85	5/8/16MM	13/16
LS8	10MM	2	LS34	12MM	27/8	LS60	3/4	33/16	LS86	3/4	25/16
LS9	10MM	21/8	LS35	1/2	11/4	LS61	5/8/16MM	4	LS87	5/8/16MM	39/16
LS10	10MM	23/8	LS36	1/2	15/16	LS62	5/8/16MM	29/16	LS88	14MM	27/16
LS11	10MM	3	LS37	1/2	13/8	LS63	1/2	1/2	LS89	1	13/4
LS12	7/16	11/4	LS38	1/2	11/2	LS64	21MM	115/16	LS90	14MM	25/8
LS13	7/16	15/16	LS39	1/2	15/8	LS65	1	2	LS91	14MM	13/4
LS14	7/16	13/8	LS40	1/2	111/16	LS66	3/4	13/8	LS92	14MM	111/16
LS15	7/16	17/16	LS41	1/2	21/4	LS67	3/4	111/16	LS93	18MM	31/4
LS16	7/16	15/8	LS42	14MM	15/16	LS68	3/4	17/8	LS94	5/8/16MM	23/4
LS17	7/16	17/8	LS43	14MM	19/16	LS69	3/4	115/16	LS95	20MM	23/8
LS18	7/16	21/8	LS44	14MM	17/8	LS70	3/4	21/4	LS96	1/2	17/8
LS19	7/16	33/16	LS45	14MM	27/16	LS71	3/4	23/4	LS97	1/2	23/4
LS20	7/16	33/8	LS46	14MM	31/8	LS72	7/16	2	LS98	5/8/16MM	3
LS21	12MM	1	LS47	9/16	15/8	LS73	7/16	21/2	LS99	5/8/16MM	31/4
LS22	12MM	11/8	LS48	9/16	27/16	LS74	12MM	111/16	LS100	11/8	4
LS23	12MM	11/4	LS49	5/8/16MM	13/16	LS75	20MM	13/4	LS101	11/8	25/8
LS24	12MM	13/8	LS50	5/8/16MM	11/2	LS76	1/2	23/8	LS102	7/8	21/4
LS25	12MM	17/16	LS51	5/8/16MM	19/16	LS77	1/2	27/16			
LS26	12MM	11/2	LS52	5/8/16MM	111/16	LS78	9/16	11/2			

CROSS PIN MOUNTING



CODE	END	A	B	CODE	END	A	B
XP1	O	5/16	23/16	XP8	O	5/16	3
XP2	O	5/16	23/8	XP9	O	5/16	35/8
XP3	O	5/16	27/16	XP10	O	3/8	25/8
XP4	C	5/16	27/16	XP11	C	3/8	23/4
XP5	C	5/16	21/2	XP12	O	3/8	33/16
XP6	O	5/16	23/4	XP13	C	12MM	215/16
XP7	C	5/16	27/8	XP14	C	1/2	33/8

CANTILEVER PIN MOUNTING



CODE	A	B
CP1	1/2	11/16
CP2	1/2	13/16
CP3	1/2	15/16
CP4	1/2	11/2
CP5	5/8	15/16

LB1 = Loop & Bearing Mount - 1/2" Hole ID x 3/4" Bearing Width
 CLEV = Clevis Bracket Mount
 SPEC = Special Mount

SHOCKS

LOAD ADJUSTING SHOCKS

AIR SHOCKS

CARTRIDGES

STRUTS

LIFT SUPPORTS

MOUNTING & LENGTH CHARTS—AIR SHOCKS

PART NO.	MOUNTING		LENGTHS			PARTS PACK	PART NO.	MOUNTING		LENGTHS			PARTS PACK
	Lower	Upper	Comp.	Ext.	Trav.			Lower	Upper	Comp.	Ext.	Trav.	
MAX-AIR® AIR SHOCK ABSORBERS							MAX-AIR® AIR SHOCK ABSORBERS — Continued						
MA700	L1/CP3	S4	12.750†	21.375	8.625	P576 & P1134	MA776	LS26	XP7	15.000	24.375†	9.375	P941
MA702	L1/CP4	XP7	12.625†	20.750	8.125	P72	MA777	LS26	S4	12.500†	20.500	8.000	P1135
MA704	L2	L2	13.125†	21.250	8.125	P76	MA778	LS47	XP5	13.875†	22.875†	9.000	None
MA705	S4	S4	10.875†	17.375†	6.500	(2) P1134	MA779	LS47	XP7	14.500†	23.750†	9.250	None
MA706	LS14	XP7	13.000†	21.375	8.375	P414	MA780	LS16	XP7	13.375†	21.500	8.125	None
MA708	S4	XP7	12.250†	19.875†	7.625	P1137	MA784	LS7	LS7	13.375†	21.500†	8.125	None
MA709	S4	L1/CP1	10.750†	17.375	6.625	P459 & P1135	MA785	LS53	LS14	9.500†	14.000†	4.500	P437
MA711	LS14	S4	11.875†	19.625	7.750	P1134	MA789	L1/CP1	XP7	12.750†	20.500	7.750	P577
MA717	L1/CP3	XP7	12.750†	20.875	8.125	P576	MA791	LS28	LS83	15.125†	22.375†	7.250	None
MA719	L1/CP3	XP7	14.500†	23.750	9.250	P576	MA792	L1	L1	13.000†	21.250	8.250	None
MA726	LS38	S4	12.250†	19.750	7.500	P1134	MA793	LS26	S4	14.250†	23.750†	9.500	P1136
MA727	L1	L1	12.750†	20.375	7.625	P573	MA802	S4	L1	11.375	18.125†	6.750	P1137
MA728	L1/CP3	L1/CP5	14.250	23.375	9.125	P572 & P576	MA803	LS30	LS23	10.500	16.125†	5.625	None
MA730	LS38	L1	12.875†	21.000	8.125	None	MA805	L1/CP4	S4	12.750†	19.500	6.750	P72 & P1134
MA733	L2	LS39	15.500†	26.250	10.750	None	MA809	LS7	S4	14.250†	21.500	7.250	P1278
MA739	S4	S4	12.375†	20.875	8.500	(2) P1137	MA810	L1/CP3	S4	12.375†	20.500	8.125	P576 & P1136
MA743	LS47	L1/CP5	14.000†	23.000	9.000	P19	MA811	LS4	S4	13.625†	22.250	8.625	P1134
MA746	LS39	LS38	13.125†	21.000	7.875	P185	MA812	L1	L1	12.750†	20.750	8.000	None
MA750	S4	LS39	11.625†	18.875	7.250	P1134	MA813	LS7	LS7	14.125†	22.875†	8.750	None
MA751	L1/CP3	XP7	13.000†	20.625	7.625	P576	MA814	LS32	LS32	12.000†	18.375†	6.375	None
MA756	LS17	S4	10.250†	16.375	6.125	P1135	MA815	L1/CP3	S4	12.250†	19.875†	7.625	P576 & P1136
MA757	L2	LS39	13.875†	22.500	8.625	None	MA816	LS39	XP8	13.875†	22.750	8.875	None
MA758	LS74	LS74	14.125†	23.000	8.875	None	MA817	LS40	LS40	12.750†	20.875	8.125	P185 & P188
MA759	LS47	XP7	14.625†	24.000†	9.375	None	MA818	LS43	L3	14.875†	23.625†	8.750	P867
MA762	L1/CP4	XP7	12.625†	20.625	8.000	P72	MA819	L1/CP3	XP7	13.375†	21.250†	7.875	P576
MA763	XP5	S4	12.125†	20.125	8.000	P941 & P1136	MA820	L1	L1	14.375†	23.000	8.625	None
MA764	LS47	XP7	15.875†	27.125	11.250	None	MA821	LS39	XP8	15.250†	26.125	10.875	None
MA765	L1/CP4	XP12	12.875†	20.500†	7.625	P72	MA822	XP7	S1	14.500†	24.375†	9.875	P1243
MA768	LS26	LS28	12.000†	18.500	6.500	None	MA824	LS26	LS26	12.750†	20.125†	7.375	None
MA769	LS26	L1	14.125†	22.875†	8.750	P827	MA825	SPEC	S1	15.000	25.750	10.750	(2)
MA770	LS26	L1	15.875†	26.375†	10.500	P827							BE17110297
MA771	LS26	L1	14.125†	22.875†	8.750	None	MA826	LS42	LS12	11.000	16.000	5.000	None
MA772	LS26	L1	15.000†	24.750†	9.750	None	MA827	LS30	S4	18.170	25.280	7.110	None
MA773	LS26	L1	13.500†	21.750†	8.250	None	MA828	LS92	LS92	14.750	24.875	10.125	None
MA774	LS43	L3	13.500†	21.250†	7.750	P867	MA829	LS38	S4	14.375	24.875	10.500	P1135
MA775	LS26	L1	15.500†	25.750†	10.250	None	MA830	LS92	LS92	14.625	23.938	9.313	None

† Bumper Stop Unit. Dimension shown at Bumper Contact.

‡ Hydraulic Lockout Unit. Dimension shown at Lockout Contact.