

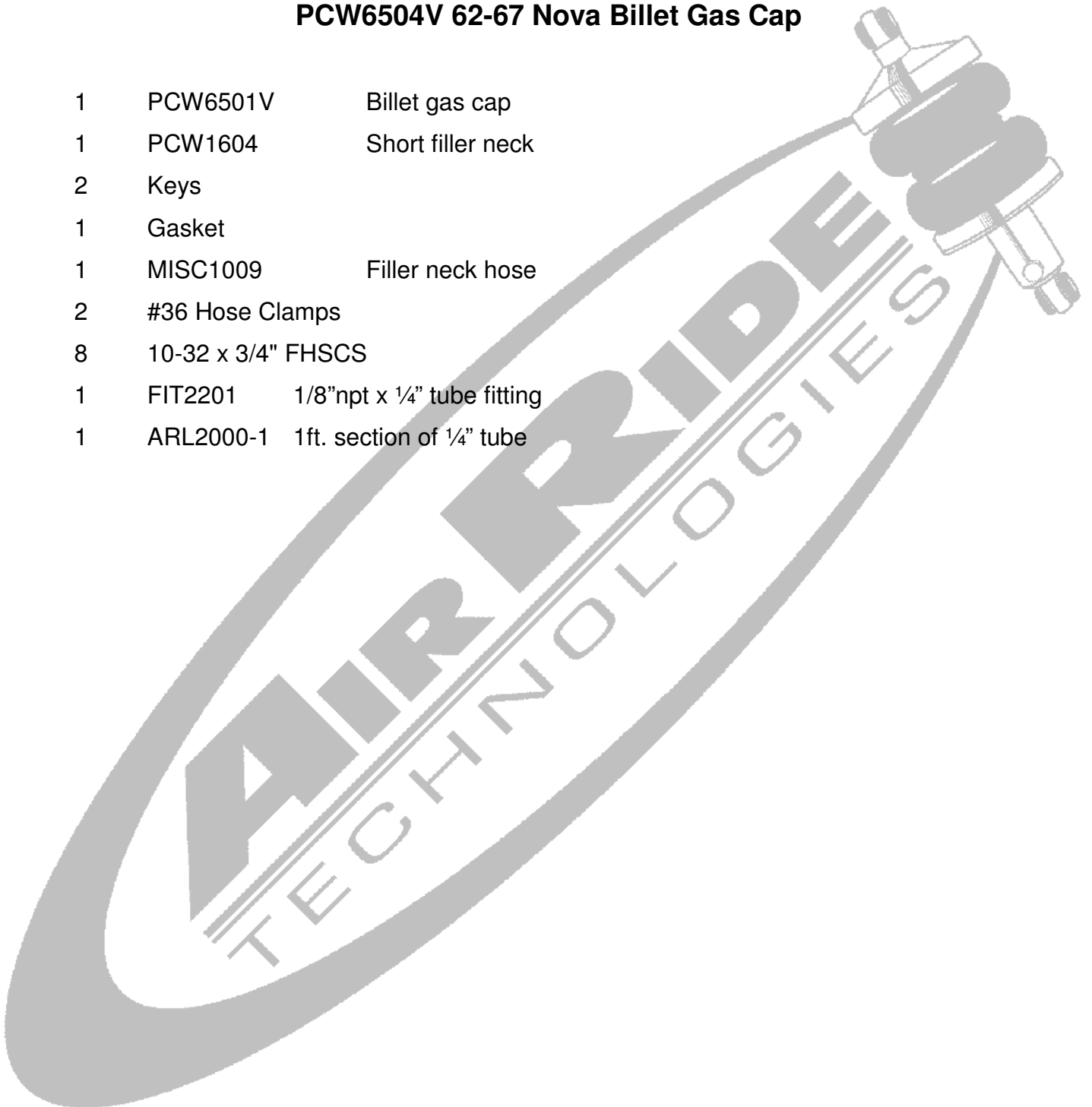
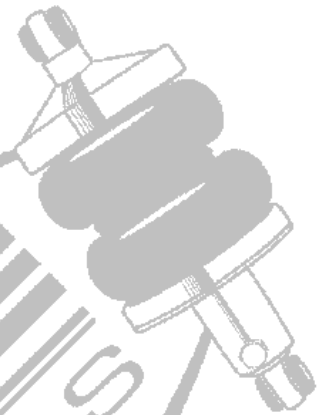
P R E C I S I O N
coachworks

A division of Air Ride Technologies
350 S. St. Charles St. Jasper, IN 47546
Ph. 812-482-2932 Fax 812-634-6632



PCW6504V 62-67 Nova Billet Gas Cap

1	PCW6501V	Billet gas cap
1	PCW1604	Short filler neck
2	Keys	
1	Gasket	
1	MISC1009	Filler neck hose
2	#36 Hose Clamps	
8	10-32 x 3/4" FHSCS	
1	FIT2201	1/8"npt x 1/4" tube fitting
1	ARL2000-1	1ft. section of 1/4" tube



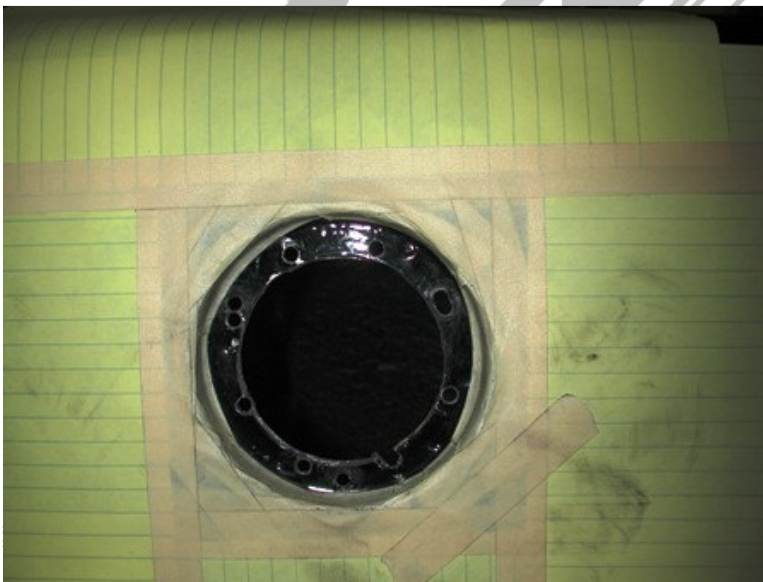
P R E C I S I O N
coachworks

Installation Instructions for PCW6504V

*******Use Anti-Seize on the threads of the stainless screws*******



1. The factory filler neck used three screws to attach it to the tail panel. This cap will use 8 screws to sandwich the cap and filler neck to the panel.
2. Use masking tape around the cap recess to protect the paint.
3. Center the cap in the recess with the locking tab facing down. Using the cap as a template, mark the 8 holes with a marker or centering punch.



4. Remove the cap and drill the holes with a 3/16" bit.



5. The factory filler neck will be reused, but the top section must be cut off to attach it to the new filler neck.

6. Apply thread sealant to the 90 degree fitting and screw it into the filler neck

7. Bolt the filler neck and cap to the recess using 10-32 x $\frac{3}{4}$ " flat head socket cap screws.

Anti-Seize must be applied to the threads before installing.



8. Attach the rubber hose to the neck with the #36 hose clamp supplied.

9. Attach the factory neck to the hose and secure with a #36 hose clamp.

10. Reattach the factory neck to the tank.

11. Slide the $\frac{1}{4}$ " tube over the factory vent tube.



10. The gas cap keys are specific to each cap. Do not lose them!

Installation Complete!