



350 S. St. Charles St. Jasper, In. 47546
Ph. 812.482.2932 Fax 812.634.6632

www.ridetech.com

Part # 11360298
73-87 C-10 Air Suspension

Front Components:

1	11330999	Front CoolRide Kit
1	11360601	Front Shock Kit – HQ Series
1	11361499	Front Lower StrongArms
1	11363699	Front Upper StrongArms
1	11369300	Drop Spindles
1	11369100	Front MuscleBar

Rear Components:

1	11366799	Rear AirBar- Bolt-on 4 Link
1	11360801	Rear Shock Kit – HQ Series



350 S. St. Charles St. Jasper, In. 47546
Ph. 812.482.2932 Fax 812.634.6632

www.ridetech.com

Part # 11330999
63-87 C10 Front CoolRide Kit
For Use w/ Lower StrongArms

Components:

2	90006873	Front air springs – 224c
2	90000060	Upper air spring plate
2	90001083	Medium bump stop – 1.5” tall
2	90000472	Aluminum bump stop extension
1	90000726	Driver side bump stop plate
1	90000727	Passenger side bump stop plate

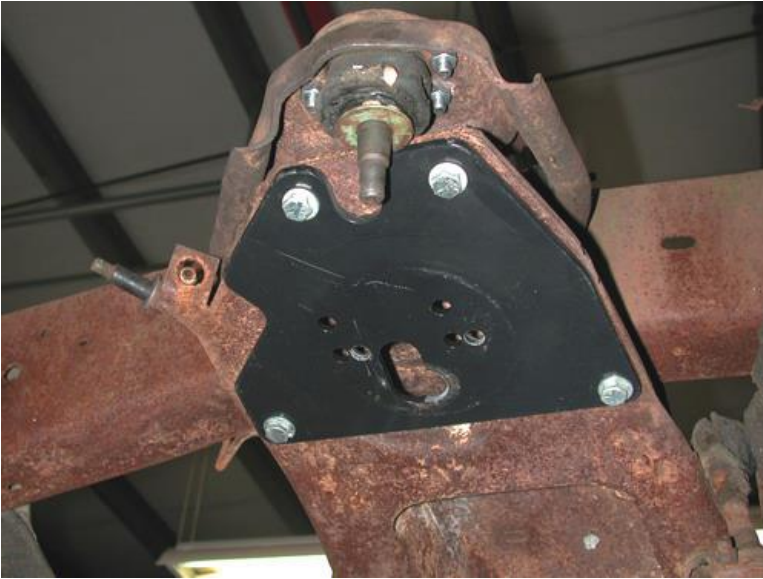
Hardware:

8	99371004	3/8” x 1 1/4” USS bolt	Upper air spring plate to frame
4	99371001	3/8” x 3/4” USS bolt	Air spring to lower control arm/ bump stop
4	99373005	3/8” lock washer	Air spring to lower control arm/ bump stop
12	99372002	3/8” nyloc nuts	
24	99373003	3/8” flat washers	

COOLRiDE[®]

by Air Ride Technologies

Installation Instructions



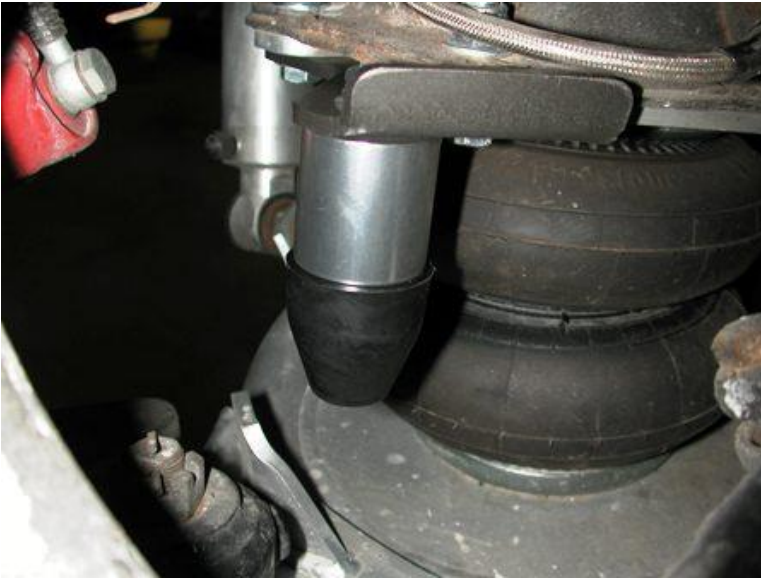
1. Hold the upper plate to the cross member as shown in the picture to the left and clamp to frame. Using the plate as a template drill four 3/8" holes in the cross member.



2. Apply thread sealant to the air fitting and thread into the air spring.

3. Remove the upper plate from the frame and place onto the studs on the top of the air spring. The holes are lettered; **slide the plate to position C** moving the air spring to the front of the vehicle. Secure with 3/8" flat washers and Nylok nuts.

Note: Airline must be routed at this time.



Note: It is acceptable to let the suspension bottom on the air spring. However, if your tire hits the inner fender well before the air spring bottoms out, this bump stop must be installed.

4. The bump stop plate will bolt to the outer two holes of the upper air spring plate. It will hang over the front side of the cross member. It is acceptable to trim the bump stop to achieve maximum drop without the tire rubbing the inner fender well.

5. The break line bracket may need to be tweaked to clear the hose.



6. Fasten the air spring to the lower control arm using a 3/8" x 3/4" bolt, lock washer and flat washer.

7. Check air spring clearance through full suspension travel. **Allowing the air spring to rub will result in failure and is not a warrantable situation.**

8. Ride height on this air spring is approximately 5" tall. The shock absorber should be at about 50-60% travel at this point. Depending on vehicle weight this will usually occur around 80-100 psi.



350 S. St. Charles St. Jasper, In. 47546
Ph. 812.482.2932 Fax 812.634.6632

www.ridetech.com

Part # 11360601
73-87 C-10 HQ Series Front Shock Kit
For use w/ Lower StrongArms

Shock:

2	22849999	HQ Smooth Body Shock Cartridge
2	70011138	3/4" ID Shock Bushing
2	90002103	5/8" ID Inner Sleeve

Components:

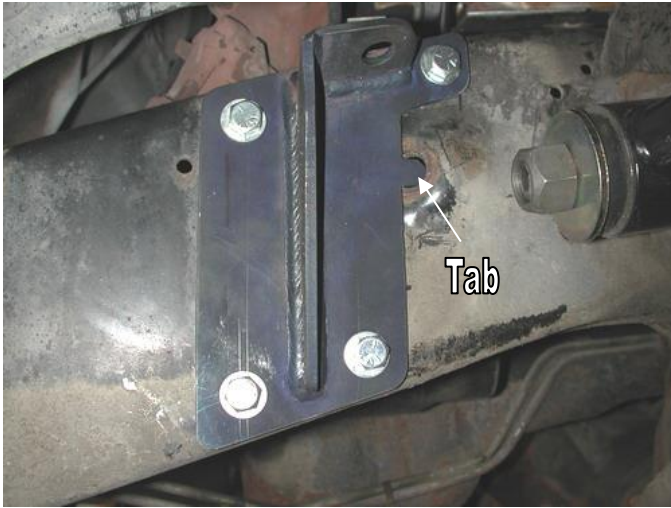
4	70011140	Stem Bushings
4	70011141	Stem Washers
1	90002303	Driver side upper shock mount
1	90002304	Passenger side upper shock mount
2	90000471	Aluminum shock spacer
2	90001619	Shock stud

Hardware:

8	99371004	3/8" x 1 1/4" USS bolt	Upper shock mount
8	99372002	3/8" USS Nylok nut	Upper shock mount
16	99373003	3/8" SAE flat washer	Upper shock mount
4	99372006	3/8"- 24 Thin Jam Nut	Upper Shock Stud



Installation Instructions



1. Place the new upper shock mount against the frame, the tab in the front of the bracket will slide into the factory shock stud hole. Position the bracket so that the bottom of the bracket is parallel to the bottom of the frame. Using the bracket as a template, mark an drill four 3/8" holes in the frame rail. Secure the bracket to the frame using four 3/8" x 1 1/4" bolts, Nylok nuts and flat washers.



2. Attach the shock to the upper mount. See diagram on following page.



3. Attach the shock to the lower control arm using the cantilever pin supplied. See diagram on following page.

ridetech

350 S. St. Charles St. Jasper, In. 47546
Ph. 812.482.2932 Fax 812.634.6632

www.ridetech.com

Part # 11361499
73-87 C-10 Front Lower StrongArms
For Use w/ CoolRide

Components:

1	90000502	Driver side lower arm
1	90000503	Passenger side lower arm
1	90000909	Lower ball joint
2	90000521	Cross shaft
2	90000471	Shock T Spacer
4	90000915	Lower control arm bushing
4	99753001	Washer, 3/4" (B) x 2 1/2" (D) x 1/8" (T), Zinc Plated
4	99752003	3/4" SAE jam nut

STRONG ARMS™

by Air Ride Technologies

Installation Instructions

Note: These control arms were designed for use w/ the RideTech bolt-on shock kit & MuscleBar swaybar. The factory shocks and sway bar will not work.

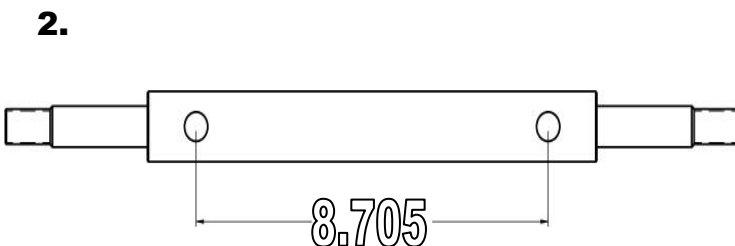
Note: These Strong Arms are used on trucks of model years 1963-1987. Throughout these years 3 different ball joints used; some are very similar. Be sure to use the correct ball joint for the year spindle you are using.



1. Bolt the lower Strong Arm to the frame using the OEM fasteners. The supplied cross shaft has 2 sets of holes. This CoolRide control arm uses the set of holes that are **8.705"** center to center. **Image 2** illustrates the holes used. Make sure to align the dowel in the frame with one of the holes in the cross shaft that is **8.705"** apart.

2. Slide the boot over the ball joint then fasten the lower ball joint to the spindle using the new castle nut and cotter pin supplied.

3. Fasten the air spring to the lower control arm using a 3/8" x 3/4" bolt supplied w/ the CoolRide kit.



4. Thread the grease zerk into the ball joint and grease.

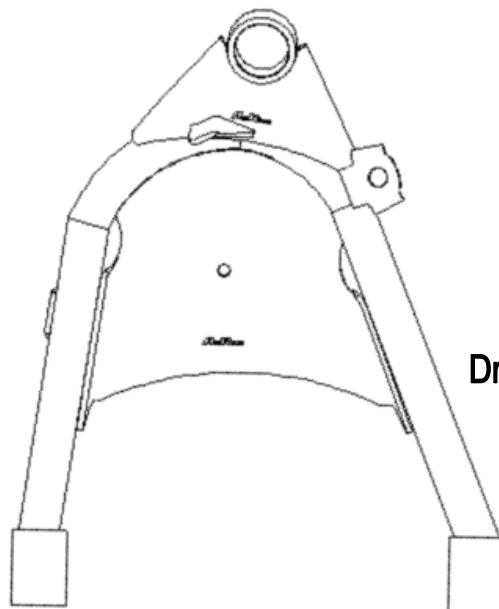
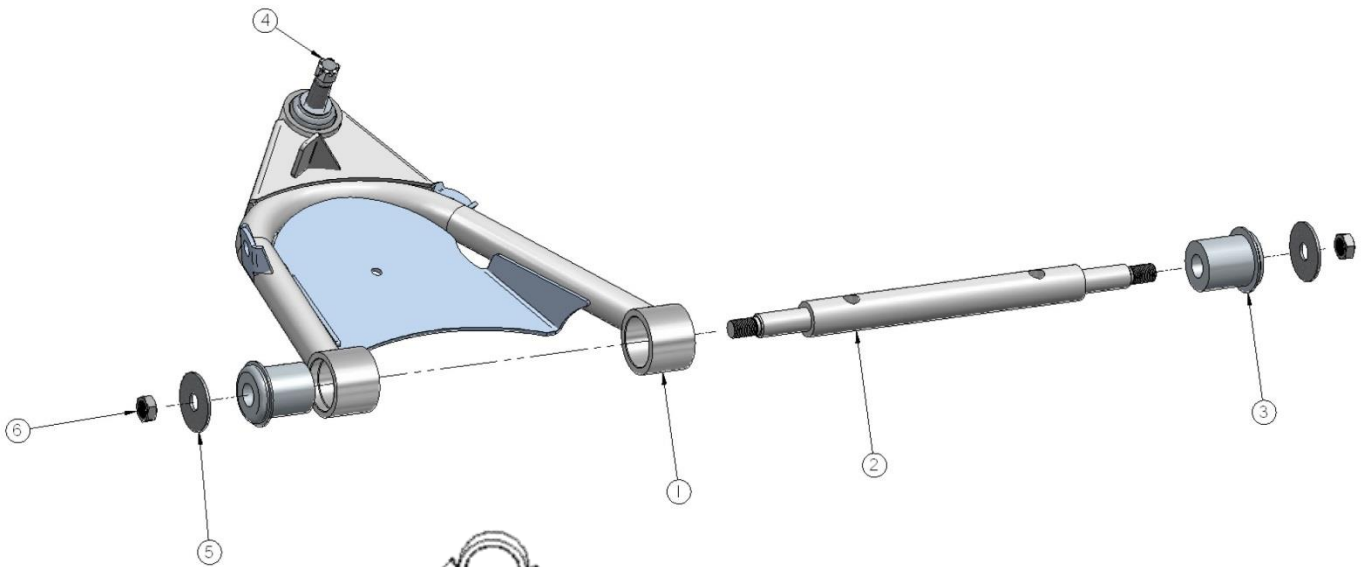
5. With the suspension at **mid travel**, the cross shaft nuts can be tightened.

6. The truck must be realigned after installation.

STRONG ARMS™

by Air Ride Technologies

Item #	Description	Qty.
1.	Driver side arm	1
2.	Cross shaft	1
3.	Ball joint	1
4.	Ball joint	1
5.	Large washer	2
6.	$\frac{3}{4}$ "-16 jam nut	2



Driver Side - Top View

ridetech

350 S. St. Charles St. Jasper, In. 47546

Ph. 812.482.2932 Fax 812.634.6632

www.ridetech.com

Part #11363699 73-87 C-10 Front Upper StrongArms

Components:

1	90000508	Driver side upper arm
1	90000509	Passenger side upper arm
2	90000721	Cross shaft
2	90000920	Cross shaft kit – 2 bushings per kit
2	90000910	Ball joint (includes boot, grease fitting, castle nut & cotter pin)

Hardware:

2	99753002	3/4" flat washer (2" diameter)	Cross shaft
2	99752005	3/4"-16 locking nut	Cross shaft

Installation Instructions

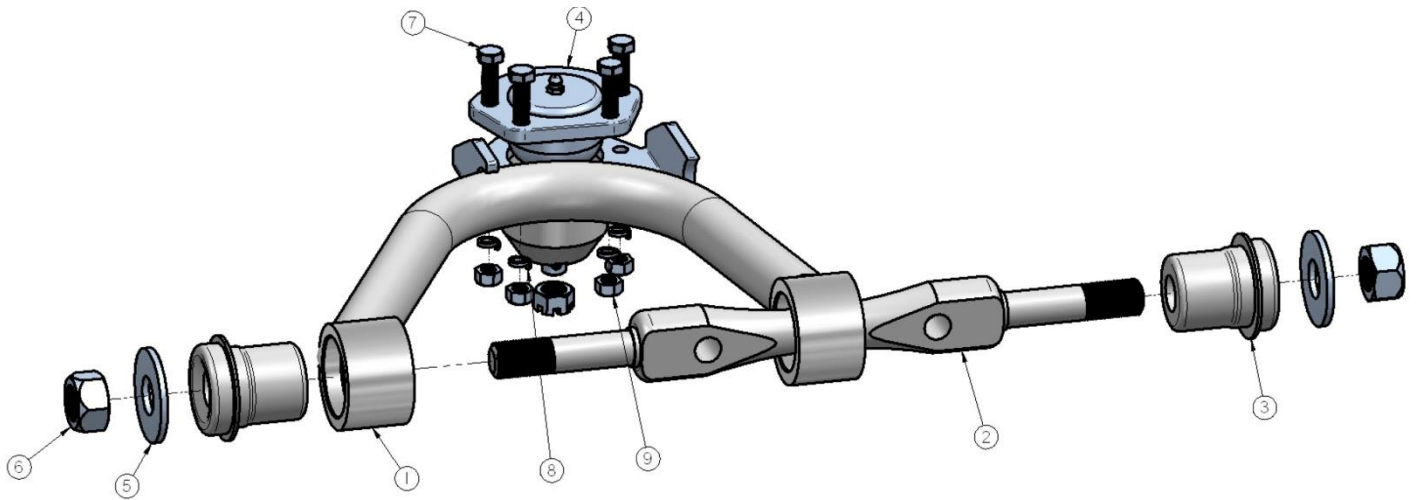


1. Drop the ball joint down through the upper control arm plate. Fasten to the arm w/ the hardware supplied.
2. Fasten control arm to frame using the stock hardware. Reuse the alignment shims; however the truck must be realigned after installation.
3. Slide the ball joint boot over the stud, then insert stud through spindle. Secure w/ new castle nut and cotter pin supplied.
4. **With the suspension at mid travel**, the upper cross shaft nuts can be tightened.
5. Install Zerk fitting and grease ball joint.

STRONG ARMS™

by Air Ride Technologies

Item #	Description	Qty.
1.	Passenger side arm	1
1.	Driver side arm	1
2.	Cross shaft	2
3.	Cross shaft bushing	4
4.	Ball joint	2
5.	3/4" x 2" flat washer	4
6.	3/4"-16 locking nut	4
7.	5/16"-24 x 1" hex bolt	8
8.	5/16" lock washer	8
9.	5/16"-24 hex nut	8





Part # 11369300 - 1973-1987 C10 HD Drop Spindles



Recommended Tools



Major ComponentsIn the box

- | | | |
|---|----------|-----------------------------|
| 1 | 11369301 | Pair of 73-87 drop spindles |
| 1 | 90001926 | Pair of caliper brackets |

Installation

Balljoint nut Torque Specs:

Upper: Torque to 50 ft lbs and then tighten nut to align cotter pin hole not exceeding 90ft lbs.

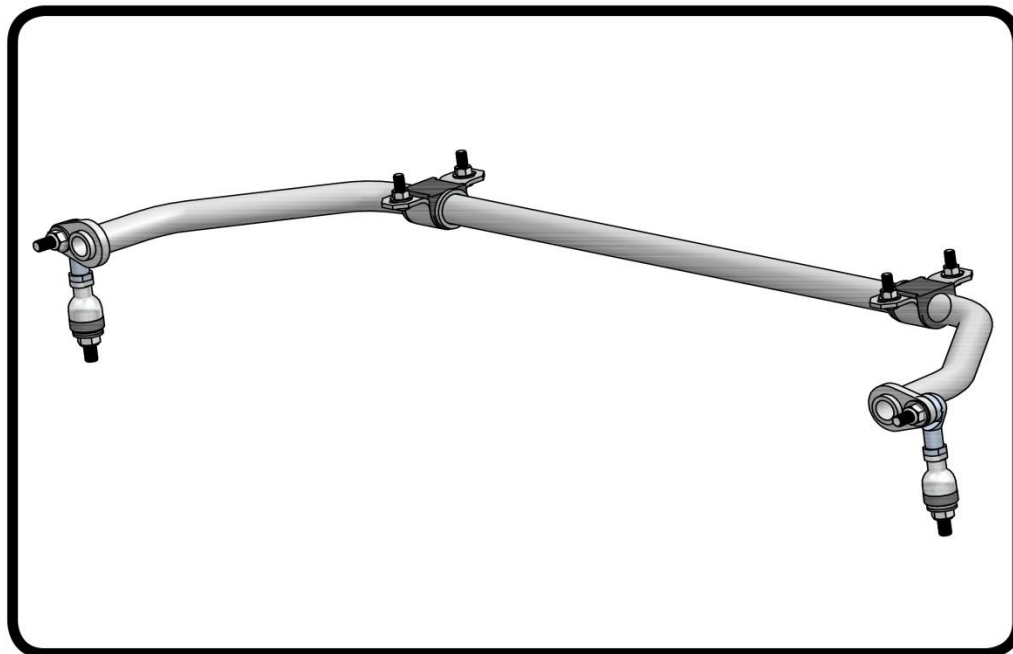
Lower: Torque to 90 ft lbs and then tighten nut to align cotter pin hole not exceeding 130 ft lbs.

Note: These spindles are set up for 1973-1987 HD Rotor and Caliper. The HD Rotor is 1 1/4" wide.





Part # 11369100 - 1963-1987 C10 Front MuscleBar



Recommended Tools



1963-1987 C-10 Rear MuscleBar Installation Instructions

Table of contents

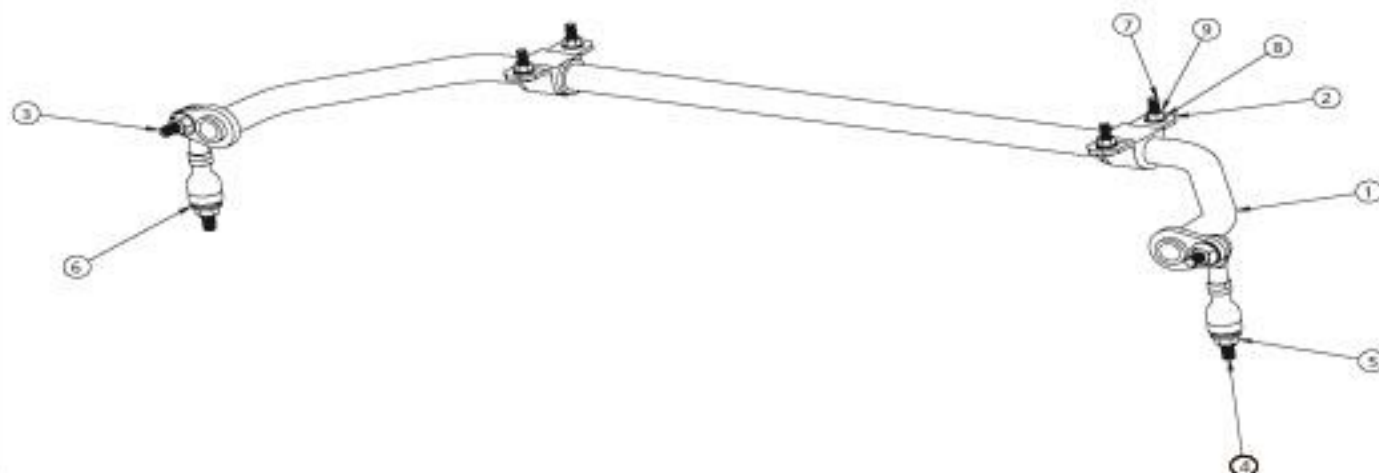
- Page 2..... Included components and Hardware List
- Page 3..... Getting Started
- Page 4..... MuscleBar Installation
- Page 5..... Final Tightening and Adjusting





Major ComponentsIn the box

Item #	Part #	Description	QTY
1	90000664	C-10 Front MuscleBar Assembly	1
2	90001100	Poly Bushing and Frame Bracket (Pr)	1
3	90000921	12mm 90 degree elbow (Preassembled Posilink)	2
4	90000922	12mm Straight Posilink (Preassembled Posilink)	2
	99125001	M12-1.75 x 45mm Stud (Preassembled Posilink)	2
	90001092	Tube of Lithium Grease (Not Shown)	1



Hardware ListIn the box

Item #	QTY	Part Number	Description	Location
5	4	99122001	12-1.75mm Nylok Nut	Posilink Endlinks to frame and MuscleBar
6	8	99433002	7/16" SAE Flatwasher	Posilink Endlinks to frame and MuscleBar
7	4	99371004	3/8"-16 x 1 1/4" Hex Bolt	Bushing Bracket to Frame
8	8	99373003	3/8" SAE Flatwasher	Bushing Bracket to Frame
9	4	99372002	3/8"-16 Nylok Nut	Bushing Bracket to Frame

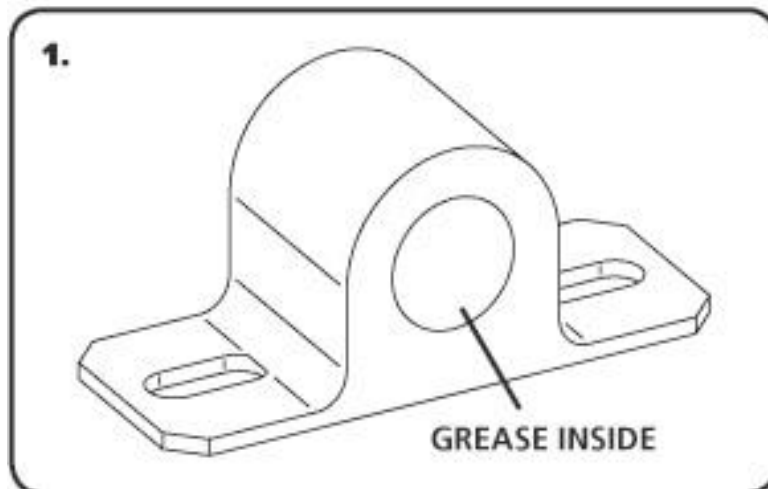


Getting Started.....

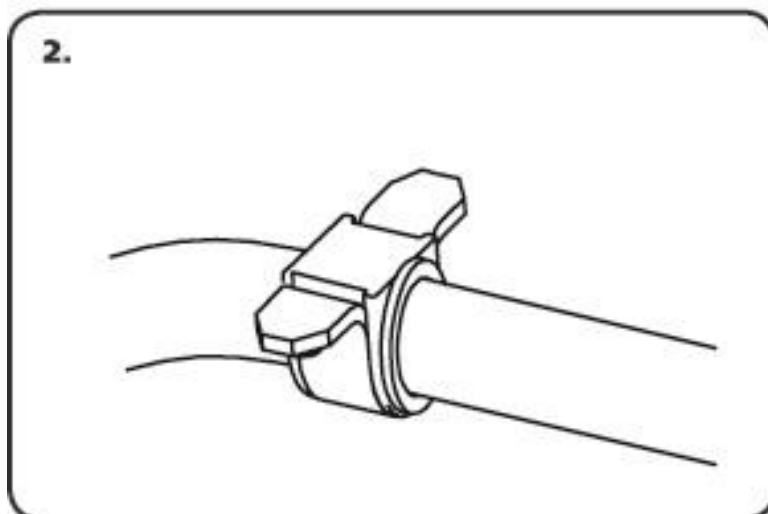
Congratulations on your purchase of the Ridetech Front Muscle Bar. This system has been designed to give your truck excellent handling along with a lifetime of enjoyment. One of the key features of this MuscleBar: Posilinks - The Posilink makes the reaction of the swaybar instantaneous.

Note: This sway bar is designed for use with RideTech lower StrongArms. It will not work with other arms without modification.

Note: Remove the factory sway bar. On trucks with a factory sway bar you will have to remove the sway bar frame mount.



1. Apply Lithium grease to the inside of the sway bar bushings using the tube of grease supplied in the kit.



2. Install the swaybar bushings and straps onto the MuscleBar. The bushings and straps get installed on the outer ends of the MuscleBar against the stop rings.



MuscleBar Installation



3. For 73-87

Remove the drop down Frame Bracket.

Bolt the new MuscleBar to the frame rail using the poly bushing and bracket. The rear hole for the factory sway bar mount will be reused for the rear hole in the new bracket. The front hole must be drilled with a 3/8" bit. Four 3/8" x 1 1/4" bolts, Nylok nuts, and eight flat washers will secure it to the frame.



3. For 63-72

Clamp the mount 2 3/4" behind the oval hole in the bottom of the frame. Both of the holes for the sway bar mount must be drilled with a 3/8" bit.

Secure the mount with four 3/8" x 1 1/4" bolts, Nylok nuts and flat washers.



4. Attach the Posilinks in the **CENTER** hole of the MuscleBar and the StrongArm using a 7/16" SAE Flatwasher on each side of the arm on the MuscleBar and each side of the bracket on the StrongArm. Install 12mm Nylok nut on each posilink and tighten down.



Final Tightening and Adjusting

5. Tighten the bolts attaching the bushings bracket to the frame. After installation, be sure that the Musclebar will go through the entire suspension travel without contacting anything

Note: If any grease is needed after installation use a lithium based grease. **DO NOT USE A PETROLEUM BASED GREASE**

STILL HAVE QUESTIONS?

Tech line hours

Monday - Friday

8AM - 6PM (EST) 812-482-2932



350 S. St. Charles St. Jasper, In. 47546
Ph. 812.482.2932 Fax 812.634.6632

www.ridetech.com

Part # 11376799
88-98 C1500 AirBar

Components:

2	90009100	Air spring
2	90001617	Shock stud
2	90000119	Mounting plate – air spring to lower arm
2	90001082	Short bump stop
1	90000190	Carrier bearing spacer
1	90000494	Panhard bar axle mount (with stud pressed in)
1	90000487	P/H bar stud (pressed into 90000494)
2	90000967	Upper bars – TW 19.75” (c-c 21.50”)
2	90001036	Lower bar – WW 32.25”
1	90000964	Panhard bar – TW 19.25” (c-c 21.00”)
3	90001584	Rod end
4	90001085	Poly bushing half
2	90001094	Inner sleeve for lower bar
8	90001942	Rubber bushings pressed into bar ends
1	90000485	Front upper bar frame bracket
1	90000486	Front upper bar frame bracket
1	90000488	C-Notch – Driver side
1	90000489	C-Notch – Passenger side
1	90000491	Upper bridge assembly
1	90000492	Lower bridge assembly
2	90000493	Upper axle bracket
1	90000490	Brake line bracket
1		C notch template
1	99010013	Hardware kit (see following page)



350 S. St. Charles St. Jasper, In. 47546
Ph. 812.482.2932 Fax 812.634.6632

www.ridetech.com

Hardware Kit: Part # 99010013

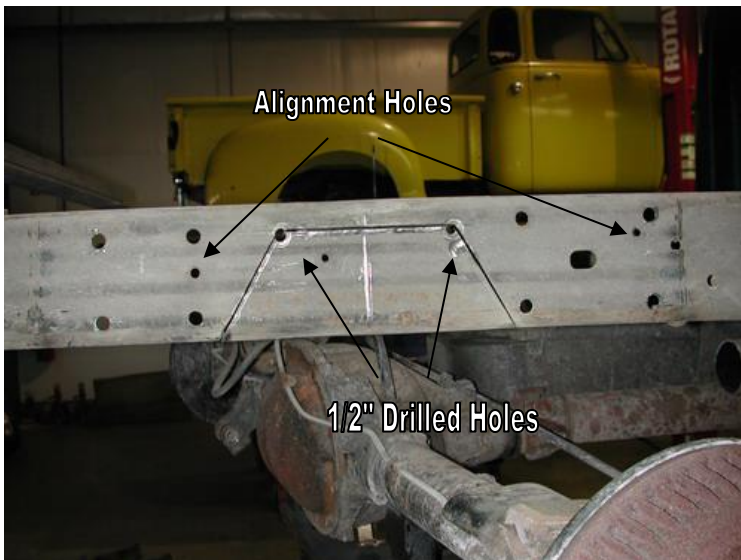
44	1/2 x 1 1/2 USS bolt	C-notch, Upper bridge, & upper bar mount
44	1/2 USS Nyloc Nuts	C-notch, Upper bridge, & upper bar mount
88	1/2 SAE Flat washers	C-notch, Upper bridge, & upper bar mount
8	5/8 x 6 1/2 SAE Gr.8 Bolts	Lower Bridge
8	5/8 SAE Gr. 8 Nyloc Nuts	Lower Bridge
16	5/8 SAE Gr. 8 Flat washers	Lower Bridge
7	5/8 x 2 3/4 SAE Gr. 8 Bolts	Bar to bracket
7	5/8 SAE Gr.8 Thin Nyloc nuts	Bar to bracket
2	3/8 x 2 1/2 USS Bolts	Carrier bearing bracket
2	3/8 USS Nyloc nuts	Carrier bearing bracket
8	3/8 SAE Flat washers	Carrier bearing bracket & Air Spring to mounts
2	1/2 x 2 1/2 USS bolts	Lower Shock mount
2	1/2 USS nyloc nuts	Lower Shock mount
3	5/16 x 2 USS Bolts	Panhard bar axle mount
5	5/16 SAE Flat washers	Panhard bar axle mount & brake line bracket
3	5/16 Lock washers	Panhard bar axle mount
1	5/16 x 1 1/4 USS Bolt	Brake Line Bracket
1	5/16 USS nyloc nut	Brake Line Bracket
1	1/2 x 1 1/2 Fender Washer	Panhard bar to bracket
1	7/16 USS Nyloc nut	Panhard bar to bracket
4	3/8 x 1 USS Bolts	Air Spring to mounts
4	3/8 Lock washers	Air Spring to mounts

AirBAR[®]

by Air Ride Technologies

Installation Instructions

1. Raise vehicle to a safe and comfortable working height supported by jack stand. Let the suspension hang freely.
2. Remove bed mount bolts, gas filler neck, and all electrical wires. Safely lift bed from frame.
3. Remove the leaf springs and shocks while supporting axle.
4. The exhaust will need to be removed from the muffler rearward. The exhaust can either be rerouted when installation is complete or a turndown may be installed.



5. Hold the C-notch template up to the frame. It will index off two small holes in the frame, one in front of the notch and one behind. Scribe the cutout in the frame.

6. Drill one 1/2" hole in each of the top corners of the notch as shown. This will give a round corner instead of a sharp corner to reduce stress points and eliminate the possibility of a fracture.

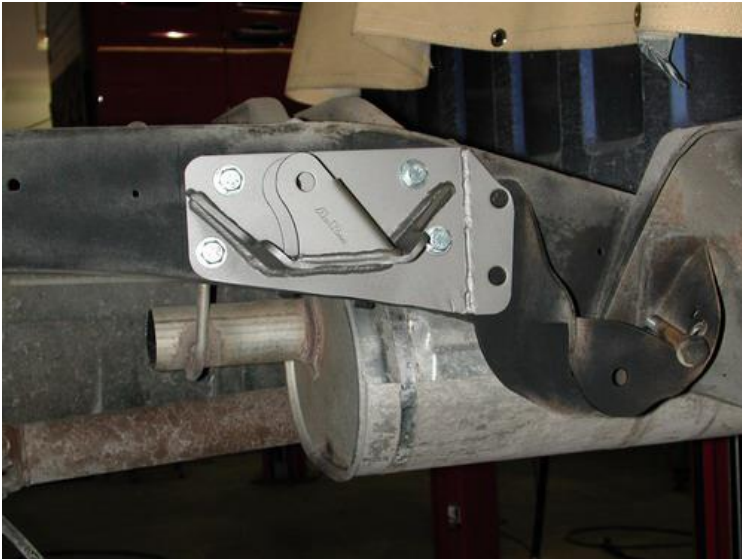


7. SUPPORT THE REAR PORTION OF THE FRAME BEFORE CUTTING!

8. Cut the notch out with a sawzall or plasma cutter. Watch for the fuel tank and any wires or hoses.

9. Slide notch onto frame and align with index holes. Drill holes in frame and fasten with 1/2" x 1-1/2" bolts nylocs and washers.

10. Place bump stop through the hole in the center of the notch and fasten with supplied nyloc and washer.



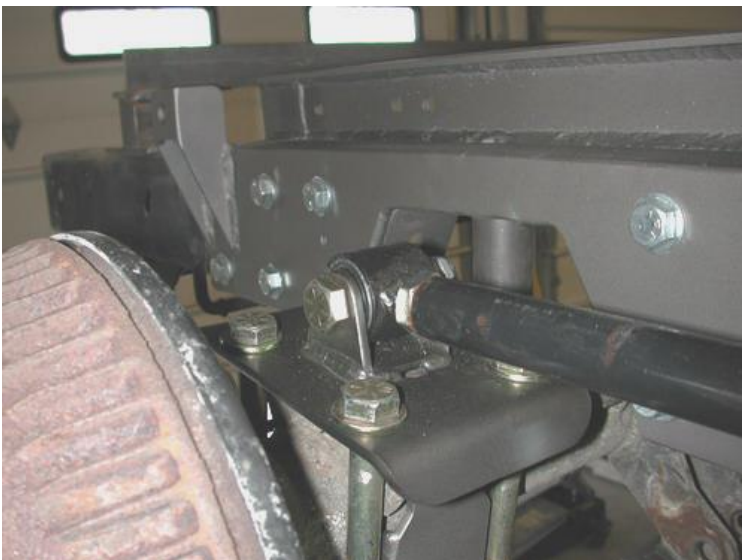
11. Align upper bar frame bracket with the rivets in the leaf spring hanger. Drill one hole and fasten with 1/2" x 1-1/2" bolts, washers, and nylocs. Then drill remaining holes and tighten all bolts.

12. Watch for brake lines, fuel lines, and wiring harness.



13. Clamp the lower bridge to the axle using the upper frame brackets and 5/8" x 6 1/2" bolts supplied. It will be clocked with the leaf spring alignment pin hole and the Allen head bolt in the upper axle bracket.

14. Attach the lower bar (the longer one) to the bridge and frame bracket. Use 5/8" x 2 3/4" bolt supplied for upper bar and factory bolt for lower bar.

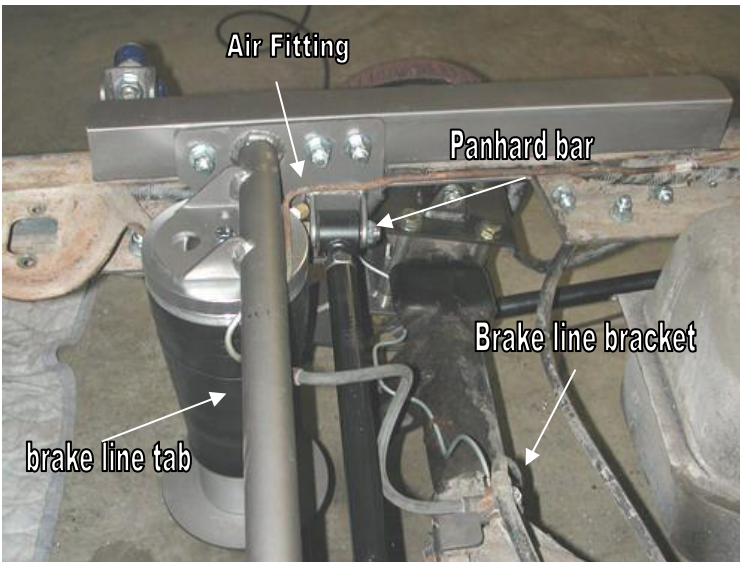


15. The upper bar will attach to the upper axle bracket and to the frame bracket. It will use 5/8" x 2 3/4" bolts on both ends.



16. Fasten the shock stud to the notch and then slide shock onto stud.

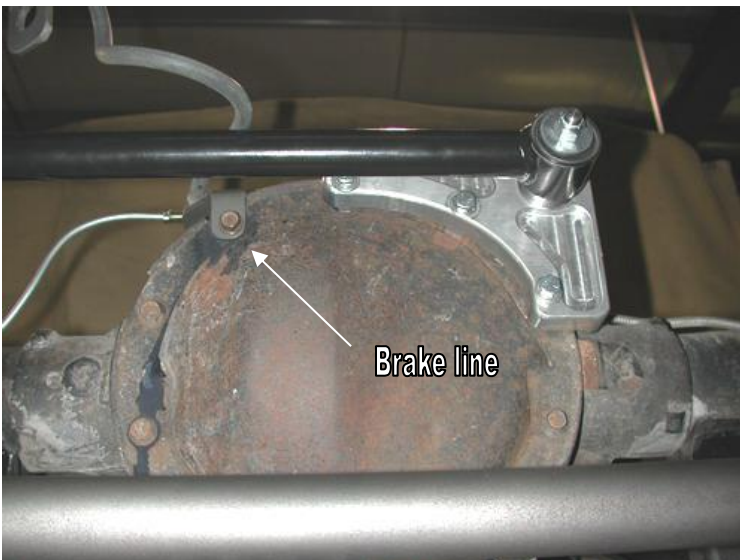
17. The shock will attach to the lower bridge using a 1/2" x 2 1/2" bolt and nyloc.



18. Bolt in the upper bridge between the frame rails attaching to the C notch. Use 1/2" x 1 1/2" bolts supplied.

19. Apply a tread sealant to the air fitting and tighten to snug in air spring. Place lower plate onto lower bridge then air spring and secure with 3/8" x 1" bolt. The air spring will attach to the upper bridge also using a 3/8" x 1" bolt.

20. The brake flex line will attach to the hard line with the tab on the upper bridge



21. Remove 3 bolts from the axle cover and attach panhard bar mount as shown. Use the 5/16" x 2" bolts that are supplied.

22. Attach the brake line bracket to the axle cover as shown. Bolt brake lines to bracket.

23. Slide panhard bar on stud and secure with nut and washer. The other end of the panhard bar will attach to the upper bridge.



24. Install carrier bearing spacer between carrier bearing housing and cross member. Secure with 3/8" x 2 1/2" bolts.



25. The brace on the bottom side of the bed will need to be removed for C notch and axle clearance. This is best done with a cutoff wheel. Double check clearance with axle and notch when fully deflated.



26. Set the bed back on the frame and reassemble. After tightening bolts check axle, C-notch, and wheel clearance. Note that the axle will shift slightly from side to side through suspension travel. Also check brake lines, vent tube, and airlines for proper slack.

27. Make sure nothing can touch the air spring at any time through full suspension travel.

28. This air spring should be approximately 10.5" tall at ride height.



350 S. St. Charles St. Jasper, In. 47546

Ph. 812.482.2932 Fax 812.634.6632

www.ridetech.com

Part # 11360801

73-87 Chevy C10 Rear HQ Series Shock Kit

For Use with AirBar

Shock:

2	22969999	HQ Smooth Body Shock Cartridge
4	70011138	3/4" ID Shock Bushing
4	90002103	5/8" ID Shock Sleeve