

# INSTRUCTION SHEET FOR SETS:

- 3-4111 1965-67 Hardtop & El Camino
- 3-4112 1965-67 Convertible
- 3-4127 1964 Convertible
- 3-4128 1964 Hardtop & El Camino



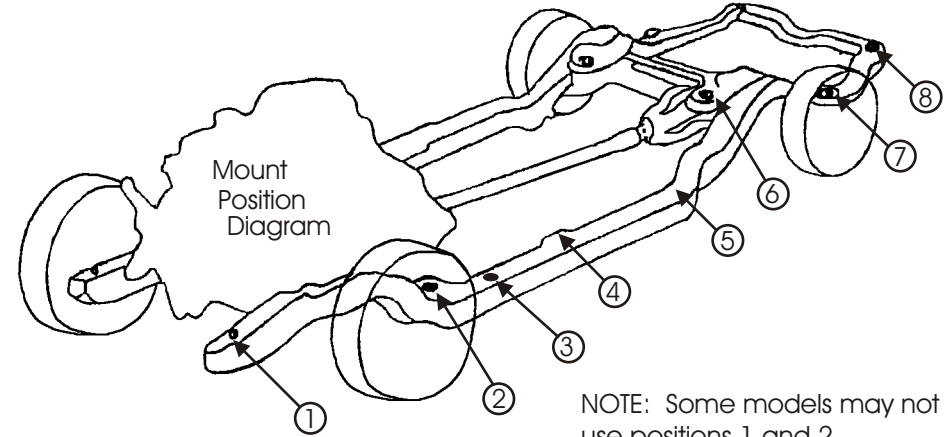
1131 VIA CALLEJON, SAN CLEMENTE, CA 92673

## Read this instruction sheet thoroughly before initiating any work!

**NOTE:** When disassembling the body mounts, be sure to note the number and position of shims that may have been used to align the body. These shims will have to be reused to retain proper body alignment.

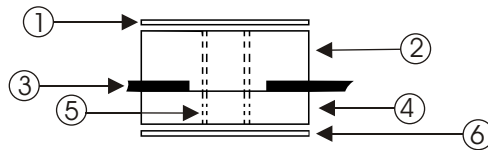
**CAUTION:** Remove all the body mount bolts on one side of the vehicle. Loosen but do not remove all the body mount bolts on the opposite side of the vehicle. Only raise one side of the vehicle at a time, lifting the body only high enough to remove/replace the mounts. Always watch the fan shroud, brake lines, and various hoses for sufficient clearance when raising the body. When jacking the body, use a 2x4 or equivalent to spread the weight. Never place jack faces directly on body panels!

When all mounts and hardware are installed, torque all bolts to factory specifications.



**NOTE:** Some models may not use positions 1 and 2. Reference above drawing to match positions on your vehicle.

### POSITION #1



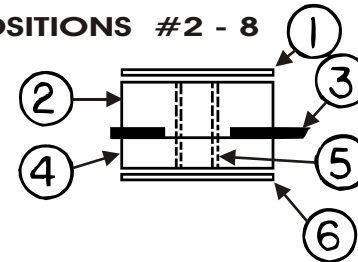
#### Position #1

1. 2 x 7/16 I.D. washer
2. 4050 top bushing
3. Body
4. 4052 bottom bushing
5. 3/4 x 9/16 x 1.200 sleeve
6. 2 x 7/16 I.D. washer
7. Frame

#### Position #4

1. 2 x 3/4 I.D. washer
2. 4072 top bushing
3. Frame
4. 4073 bottom bushing
5. 7/8 x .715 x 1.200 sleeve
6. 2 x 7/16 I.D. Washer

### POSITIONS #2 - 8



#### Position #2,3,5,6,7,8

1. 2 x 7/16 I.D. washer
2. 4049 top bushing
3. Frame
4. 4050 bottom bushing
5. 3/4 x 9/16 x 1.200 sleeve
6. 2 x 7/16 I.D. washer

**NOTE:** Hardtop models DO NOT use bushings at position #2 in Set #3-4111

© 2002 Energy Suspension. All rights reserved.  
May not be reproduced, in any form, or by any means,  
without the written consent of Energy Suspension.

Revised by NJT  
5-17-02  
**17018**  
**NJT**